

BATTERY REPLACEMENT GUIDE

CELLULAR COMMUNICATOR

Model GSMV4G



BATTERY YOU'LL NEED

6V 3.1Ah

Sealed lead-acid backup battery (available online)



Please Note: This is your system's cellular communicator, usually mounted near the main alarm panel. Its backup battery keeps the connection alive during a power outage.

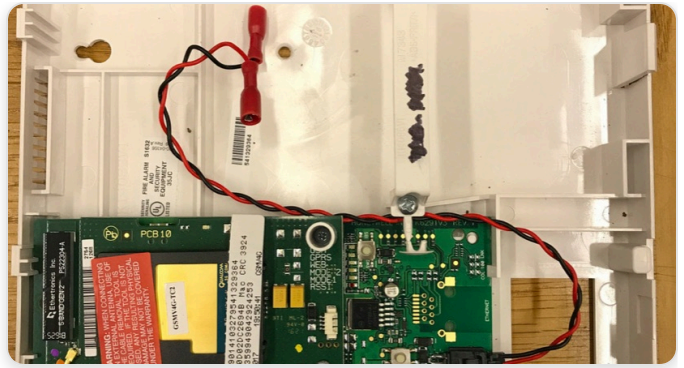
Disconnect the battery leads first. Unclip the red (+) and black (-) wires from the old battery before lifting it out, then reconnect them to the new one — red to red, black to black.

Open the cover: Open the communicator's cover — insert a flat-head screwdriver into the tab on the **bottom edge** if it is latched.



Disconnect the old battery: Unclip the **red (+)** and **black (-)** leads from the old battery, then lift the battery out.

Install the new battery: Set the new **6V sealed lead-acid** battery in place and reconnect the leads — **red to red, black to black**.



Close the cover: Replace the cover and press it shut.

You can now reset your system: Enter your 4-digit code and press **OFF**, then enter your code and press **OFF** again. (*Code + OFF, Code + OFF*.) The beeping stops and the low-battery message clears — your system is ready to use again.

**Any Questions? Please give us a call:
(718) 698-8244**